



# WEB600

Network based, scalable monitoring solution

**SENSAPHONE<sup>®</sup>**  
REMOTE MONITORING SOLUTIONS

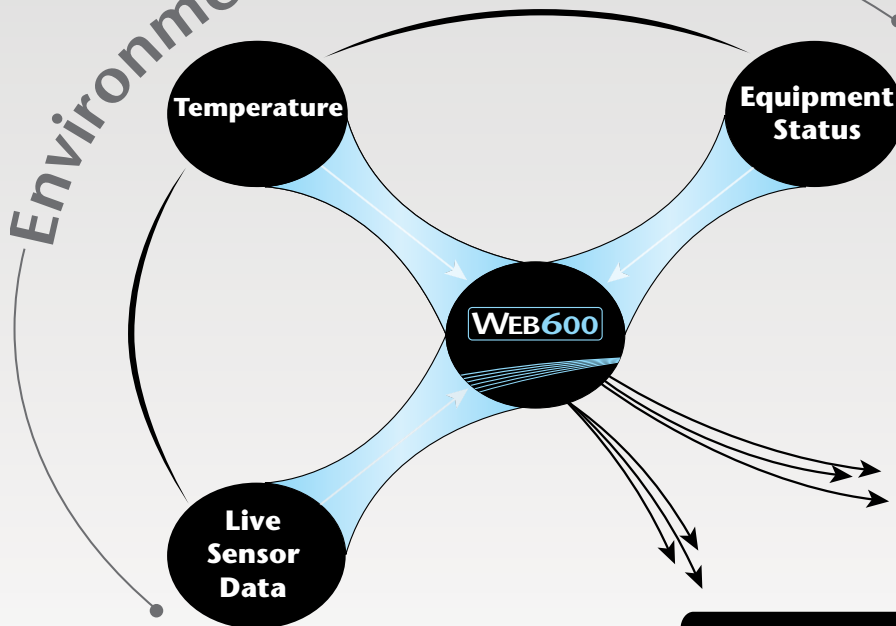
# WEB600 Simple and Effective

The Sensaphone Web600 provides flexible web-based remote monitoring at an affordable price. Keep track of critical temperatures and other conditions and be notified immediately when current values exceed the normal range. Completely standalone and easy to use, the Web600 can be used for monitoring cold food storage, medical cold storage, and other temperature sensitive areas like computer rooms and data centers. In addition to temperature monitoring, the Web600 can also read values from humidity sensors, air quality sensors, water leak detection sensors and much more.



**THE WEB600 CAN BE USED FOR MONITORING COLD FOOD STORAGE, MEDICAL COLD STORAGE, AND OTHER TEMPERATURE SENSITIVE AREAS LIKE COMPUTER ROOMS AND DATA CENTERS.**

## Environmental Threats



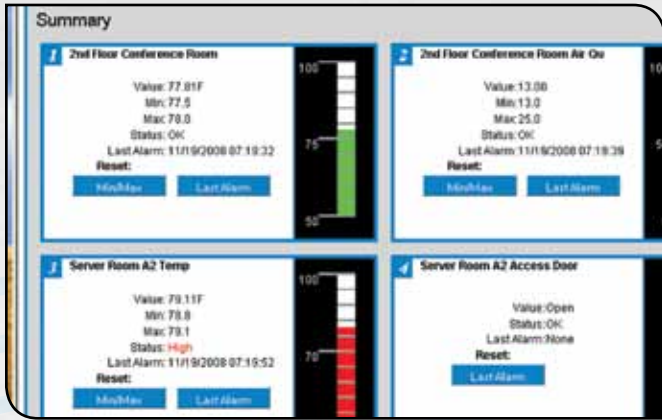
**Alarm Notification**  
E-Mail  
Text Messages

**Status**  
Web Page  
Data History



## SENSOR INPUTS AND OUTPUT:

Connect up to six external sensors to monitor a variety of equipment and conditions. Each input zone can be connected to a temperature sensor, an analog transducer, or a dry contact switch. The WEB600 also includes a relay output that can be used to control a light, siren, or other low voltage device when an alarm occurs



## WEB STATUS:

Live status and history is only a webpage away. The Web600 built in web server provides quick and easy information about your monitored conditions. Even time stamped history reports are readily available online.

## ALARM NOTIFICATION:

When monitored conditions exceed normal values, the Web600 will notify you immediately by sending out e-mail alarm messages, and even text messages. Up to eight people can be contacted to make sure that proper action is taken.

## OPTIONAL BATTERY BACKUP:

With the addition of the optional battery backup module, the Web600 can monitor for power failures and stay operational for two full hours while the power is out.



## WEB PROGRAMMING:

Built in web server for easy access to programming and status. Just point your browser to the Web600's webpage and fill in the blanks for a quick configuration.

## SPECIFICATIONS

### ALARM NOTIFICATION METHODS:

- E-Mail, Text Messages, SNMP Traps
- 8 Alarm escalation levels
- Comprehensive scheduling per input, profile, and alarm destination

### DESTINATIONS:

- 8 Programmable User Profiles
- 4 programmable alarm destinations per profile

### COMMUNICATION TYPES:

- E-Mail – SMTP
- Text Messages
- Web page – Supported formats HTTP, PDA, WAP, and XML
- SNMP – MIB with Traps, GET, GETNEXT, and SET
- MODBUS®/TCP Slave Conformance Class 0 and 1

### COMMUNICATION PORTS:

- Ethernet 10/100Base-T

### INPUTS:

- 6 Universal Inputs
  - Normally Closed / Normally Open Dry Contact
  - 2.8K / 10K Thermistor
  - 4-20mA Current Loop
- 12 Bit Resolution

### RELAY OUTPUT

- Rated for 1A 30VAC/ 1A 30VDC Maximum

### DATA LOGGING

- 32,000 Samples (all samples include data date and time)
- 1 second to 1 month sampling rate
- User programmable channel selection
  - Zones 1 – 6
  - Battery
  - Input Power

### STANDARDS:

- FCC Part 15-B Compliant

### LOCAL INDICATORS:

- Alarm Status LED
- Power Status LED
- Ethernet link and Activity LEDs

### POWER REQUIREMENTS:

- 120VAC 50/60Hz (Standard)
- 120/220VAC 50/60Hz (International version)
- Optional Battery Backup Module (FGD-W610-B)
  - Provides 2 hours of backup

### OPERATING CONDITIONS:

- 0-90% RH, non-condensing
- 0-50°C (32-122°F)

### PHYSICAL PROPERTIES:

- 5.5" x 3.25" x 1.25"
- 0.5lbs

## ACCESSORIES

### EXTERNAL BATTERY BACKUP MODULE:

Web600 Battery Backup ..... FGD-W610-B



### AVAILABLE SENSORS:

2.8K Temperature Sensor .....	FGD-0100
2.8K Weatherproof Temperature Sensor .....	FGD-0101
10K Weatherproof Temperature Sensor .....	FGD-0102
10K Indoor Decorator .....	FGD-0103
10K Immersion Temperature Sensor .....	FGD-0105
J Type Thermocouple/4-20mA .....	FGD-0220
Carbon Monoxide Sensor .....	FGD-0065
Air Quality Sensor .....	FGD-0066
Humidity 4-20mA Transmitter .....	FGD-0052
Spot Water Detector .....	FGD-0013
Zone Water Detector .....	FGD-0056
Magnetic Reed Switch .....	FGD-0006
Infa-Red Motion Detector .....	FGD-0007
Smoke Detector .....	FGD-0049

Specifications subject to change without notice.

A complete accessory specification sheet is available for all supported sensors. Please visit [www.sensaphone.com](http://www.sensaphone.com) for more information.

**SENSAPHONE®**  
901 TRYENS ROAD  
ASTON, PA 19014  
PH: 610-558-2700  
F: 610-558-0222  
[WWW.SENSAPHONE.COM](http://WWW.SENSAPHONE.COM)

**Distributed By:**