

Mopeka Pro Plus Installation Instructions

Modified on: Wed, 9 Nov 2022 8:36 PM

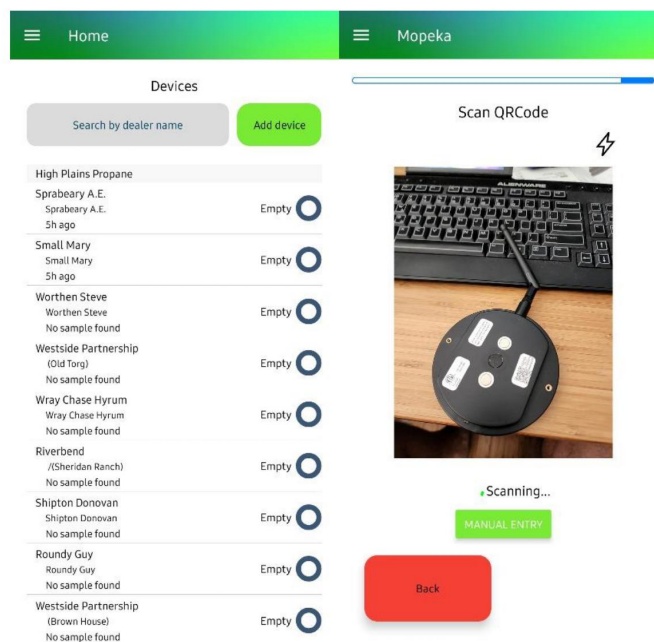


Mopeka Pro Plus Installation Instructions

1. Remove 2 screws and lid.
2. Install AAA batteries. 2, AAA Energizer Ultimate Lithium batteries are required. Note: Battery orientation is shown in the bottom of the sensor under each battery.
3. Sensor will beep 2x after both batteries are installed, to indicate power up. Note: Sensor will immediately begin the cellular provisioning process in the background at this time, while the items 4 and 5 are completed.
4. Reinstall lid and screws.
5. Download the MopekaIoT “Co-Pilot” App from the Apple or Google Play stores



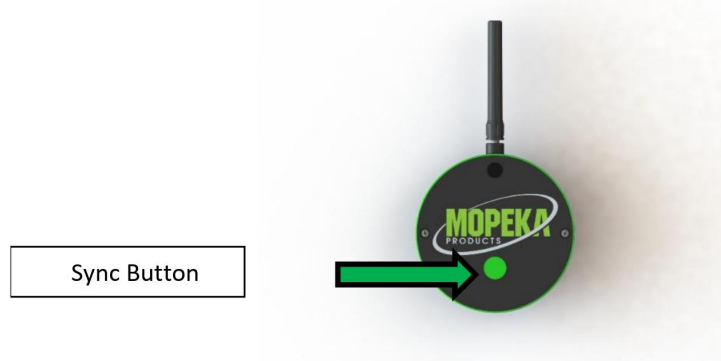
6. Open the Co-Pilot App, Login into the App using the ID and Password provided by your Distributor or System Administrator.
 - a. Hit the “ADD DEVICE” button and SCAN the Scan the QR Code on the bottom of the sensor. Follow the on screen instructions and enter the appropriate information until the sensor is installed.





No access to a Mobile Device and the Mopeka Co-Pilot App?

7. Should you not have access to a Mobile Device and the Mopeka Co-Pilot App, please reach out to your Distributor, System Administrator or Mopeka Support for assistance.
8. After all customer information is entered, push the sync button on sensor (1x, and immediately release).



9. Wait and listen for 3 beeps, this could take up to 2 minutes, after button press. 3 beeps indicate successful connection has been established to cellular service. If the 3 beeps are not heard, please repeat steps 6 and 7.
10. If the 3 beeps are still not heard, need to check cellular service availability.
11. Sensor is now ready to be installed on the tank.
12. Push and hold sync button for at least (3 seconds) until beeping starts.



13. The sequence of the beeping is an indicator of the correct installation position and quality of the ultrasonic function. (20 min installation mode).
 - a. Rapid beeping/blinking light = Poor or now quality of installation of sensor 0 to 1 star
 - b. Slower beeping/blinking light = Good quality of installation position 2 stars
 - c. Beeping stops/blinking light = Great Quality of installation position 3 stars
14. Check installer page of the Mopeka.cloud page and to see updates from sensor in cloud system
 - a. Strength of cellular connection



- b. Tank %
- c. Cellular Provider
- d. Battery Level
- e. Customer Info

Pro Plus Instructions.MopekaIoT
Website 10.24.22.pdf
(245.2 KB)