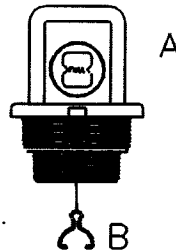


# Golden Gallon Gauge® Installation Instructions

## IMPORTANT

Read these instructions carefully before assembling the gauge for installation. Improper assembly may damage the gauge.

1. When removing the gauge (A) from the box, the float (C) is not attached to the gauge. A clip (B) is attached to a string located at the base of the gauge.

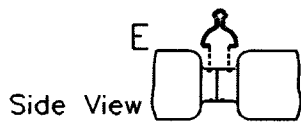


2. If the gauge is for a 1 1/2" tank opening, skip to step #5.
3. If the gauge is for a 2" tank opening, wind the string attached to the clip around the clip neck ONCE (D). Pull the string between the clip legs.



VIEW D

4. If a gauge is calibrated in inches or centimeters, you can adjust the gauge reading to suit the tank depth by winding the string around the clip neck until the correct reading is shown. This must be done holding the clip as close as possible to the gauge. See the preceding diagram.
5. Attach the float by snapping one clip leg into one hole (E) provided on the side of the float.



Side View



Top View

Snap the other leg into the opposite hole (F) diagonally across on the other side of the float. Pull on the string to make sure that the clip is securely attached to the float.

### CAUTION

6. Slowly lower the float into the tank. A fast, sudden drop can cause the string to backlash or break, ruining the gauge and voiding the warranty.

NOT FOR USE IN GASOLINE TANKS

## **scully**

Scully Signal Company  
70 Industrial Way  
Wilmington, MA 01887  
Tel: 1-800-272-8559 or 1-617-692-8600

61125, REV G